

Magic Bean Cafe - Saginaw, Michigan

DESIGN CONCEPT:

To transform a 3,500 square foot space into a warm, inviting interior for a new cafe to encourage people to linger, relax and enjoy one another's company.

The plan includes a generous bar area, a spacious cafe, an intimate lounge with fireplace, an area for private parties and special events, and a children's play area.

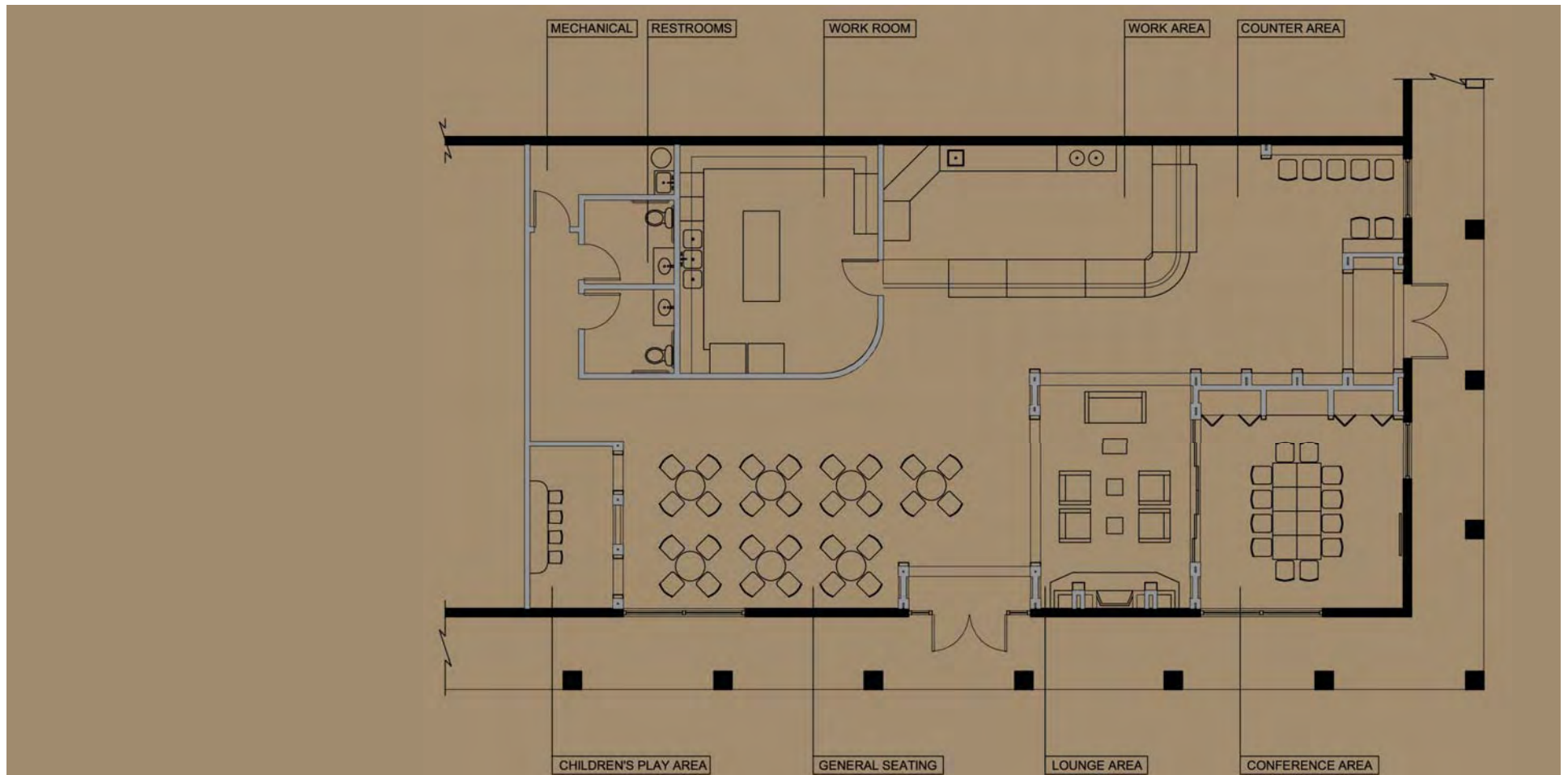
The interior design begins with the lines of the exterior architecture, but but takes them in an unexpected, playful direction.



Brennan design group

200 West Grand Avenue - Suite 1506 - Chicago, Illinois 60610 - 312.822.9207

Magic Bean Cafe - Saginaw, Michigan



The space plan divides the generous square footage of the space into a series of intimate spaces without sacrificing openness.

Brennan design group

200 West Grand Avenue - Suite 1506 - Chicago, Illinois 60610 - 312.822.9207

Magic Bean Cafe - Saginaw, Michigan

A line of angled columns, echoing the graceful line of the Frigomeccanica bar, greets patrons and leads them to the bar area. The warm, rich colors of the walls, columns and soffits create a subdued backdrop for the vibrant green and glistening metal of the bar. The floor with its variegated earth tones and hints of green unites the whole.



Brennan design group

200 West Grand Avenue - Suite 1506 - Chicago, Illinois 60610 - 312.822.9207

Magic Bean Cafe - Saginaw, Michigan



Playful angles and soft curves give the bar area an edginess; the dark colors and specially designed lighting focus patrons' attention on the gelato, pastries and other treats offered by the cafe. Thanks to the ambience patrons sample it all with their eyes as they decide what temptation to give in to.

Brennan design group

200 West Grand Avenue - Suite 1506 - Chicago, Illinois 60610 - 312.822.9207

Magic Bean Cafe - Saginaw, Michigan



The cafe is defined by a lighter shade of tile, leaving a broad path that allows patrons to view the latest exhibit of original art. An enclosed play area provides a safe zone for children and a quiet time out for parents. Rich resilient cork softens the children's area.

Brennan design group

200 West Grand Avenue - Suite 1506 - Chicago, Illinois 60610 - 312.822.9207

Magic Bean Cafe - Saginaw, Michigan



A fireplace framed in natural stone provides a focal point in the intimate lounge area with its cork floor and comfortable seating. Sliding glass partitions can be opened to reveal a more intimate cafe setting or be closed to create a room for special events or meetings.

Brennan design group

200 West Grand Avenue - Suite 1506 - Chicago, Illinois 60610 - 312.822.9207

Magic Bean Cafe - Saginaw, Michigan

At Brennan Design Group the design process begins with listening to our clients' needs, expectations, and vision. We present our schematic design concepts with a computer model that allows them to visualize the ideas, make changes and try out materials and finishes.

We research and propose materials, finishes, lighting and furnishings to complete the vision.

When the design is finalized we provide detailed construction drawings for all of the interior architecture, millwork and unique aspects of the project, providing for the electrical and mechanical needs of the bar and food preparation areas so that the installation will go smoothly. We make sure everything meets ADA and local building codes.

If our clients so desire, we can oversee the construction phase to make sure that everything is carried out as specified in the drawings, value engineer aspects of the project as needed, and deal with any unforeseen eventualities.



Brennan design group

200 West Grand Avenue - Suite 1506 - Chicago, Illinois 60610 - 312.822.9207